



MONTHLY MEMBERSHIP PROGRESS REPORT

District 110CW

Results as of: 4/30/2015

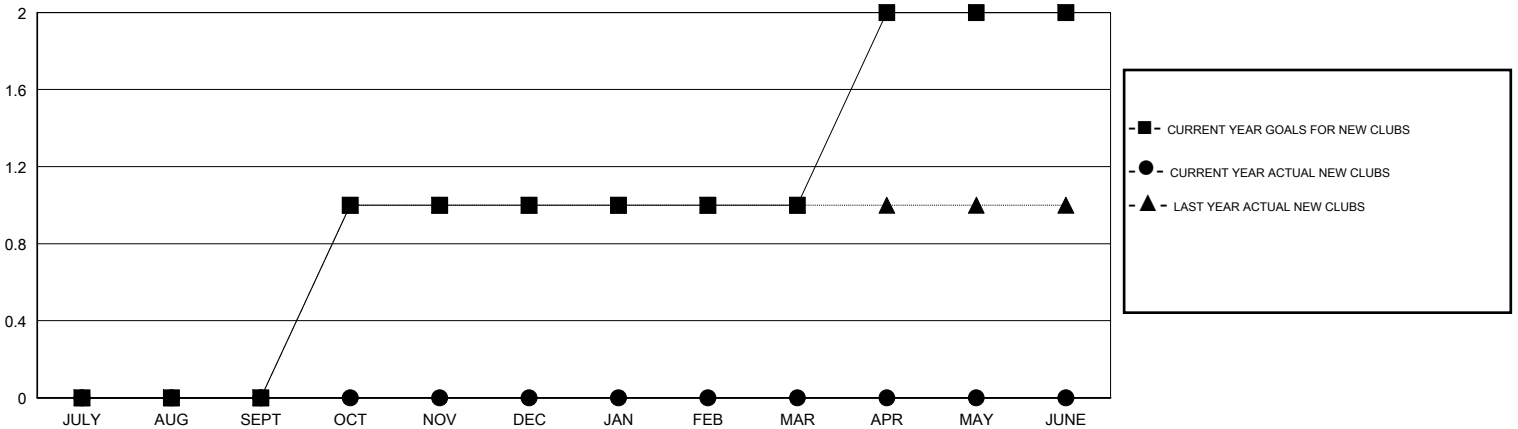
GMT: Elisabeth Haderer

LOCATION NETHERLANDS

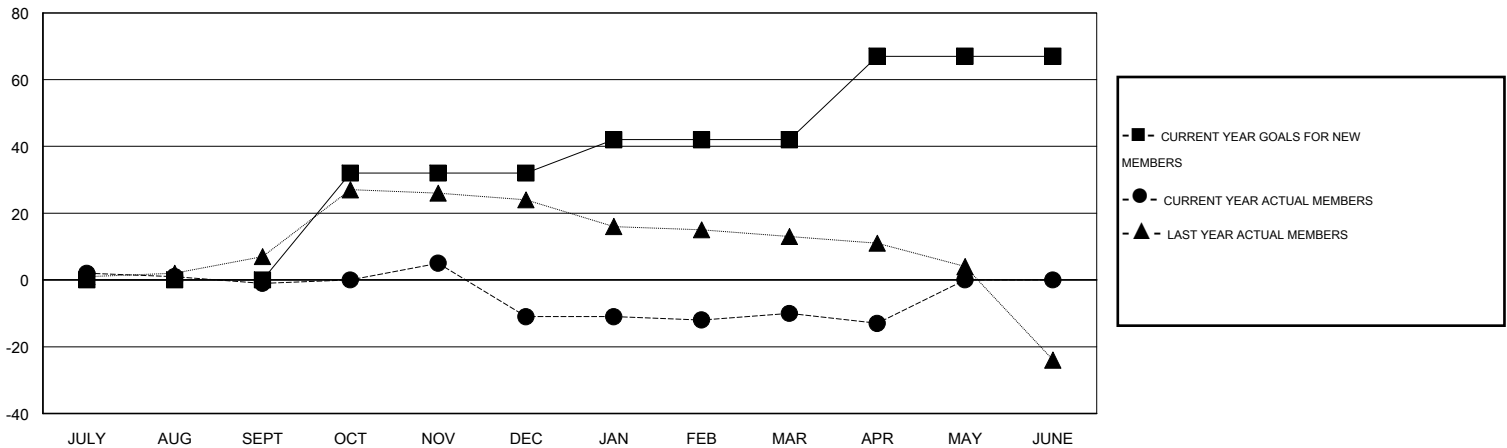
GMT CA 4

Clubs					Members				
RESULTS FOR 2014-2015					RESULTS FOR 2014-2015				
QUARTER	NEW CLUB GOAL	NEW CLUBS	DROPPED CLUBS	NET GAIN/LOSS	QUARTER	NEW MEMBER GOAL	CHARTER AND NEW MEMBERS ADDED	DROPPED MEMBERS	NET GAIN/LOSS
JULY/AUG/SEPT	0	0	0	0	JULY/AUG/SEPT	0	12	13	-1
OCT/NOV/DEC	1	0	0	0	OCT/NOV/DEC	32	20	30	-10
JAN/FEB/MAR	0	0	0	0	JAN/FEB/MAR	10	19	18	1
APR/MAY/JUNE	1	0	0	0	APR/MAY/JUNE	25	5	8	-3

GOALS AND ACTUAL NEW CLUBS CUMULATIVE



GOALS AND ACTUAL MEMBERS CUMULATIVE



DROPPED CLUBS: 0	37 CLUBS OF 72 ADDED 1 OR MORE NEW MEMBERS	<u>GENDER DISTRIBUTION</u>	
<u>DROPPED MEMBERS</u>		MALE	1,692 (89.05%)
DECEASED	8	FEMALE	208 (10.95%)
CLUB CANCELLED	0	<u>FAMILY UNIT MEMBERS</u>	
OTHER	61	FAMILY UNIT MEMBERS	
TOTAL	69	HEAD OF HOUSEHOLD	
	CLICK HERE FOR HEALTH ASSESSMENT DATA	NON-HEAD OF HOUSEHOLD	
		0	
		0	
		0	